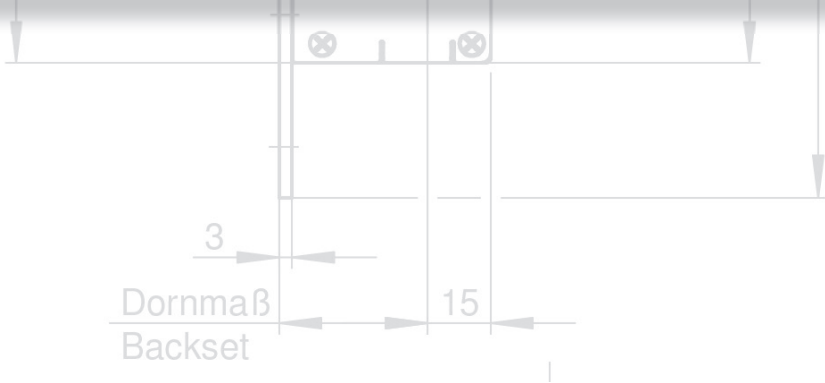




**Electrically couplable emergency exit lock**



## Electrically couplable emergency exit mortise locks

Electrically couplable emergency exit mortise locks are particularly well suited for doors that require special monitoring and control. The electrically connectable exterior handle, which is operated via the energised exterior follower, allows for an electronic access control and checking as it is, for example being used in emergency exit and modern building management systems. The operation of the door can comfortably be performed via a wall reader, a door opener button, intercom systems or an access control system.

The intelligent closing sequence control of the latch bolt, auxiliary bolt and dead bolt allows for eliminating a malfunction, like the early bolt throw prior to proper closing of the door. A latch/dead bolt unit was deliberately renounced in order to ensure the characteristics of the separate locking elements for more security.

The monitoring package in the full version allows for a monitoring of the bolt, the cam and the internal handle. The duration of the open function is individually adjustable. At the same time, an acoustic signal of the exterior follower can be adjusted. A control diode on the forend signals operational readiness subsequent to correct installation.

The basic version – without the monitoring package – fulfils the dimensions of WILKA's modular system and can thus be simply retrofitted into existing doors. An electronically controlled access can be implemented with the aid of the electrically couplable external handle, which is operated via the energised exterior follower. The passive door leaf interlocks of the series 6000 and 7000 can be used for double leaf elements.

### Characteristics

- 35 - 45 mm backset
- For single leaf and double leaf doors
- Optionally, additional locking at the top
- Forced locking function C
- Certified in accordance with EN 179, EN 1125 and EN 14846

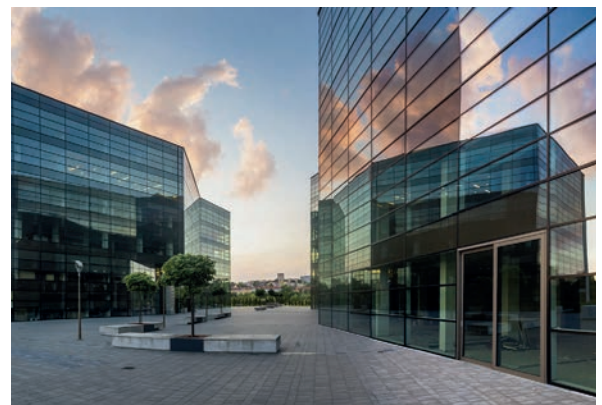
### Only for full version

- Monitoring package
- Individual duration of open function\*
- Acoustic signal can be additionally switched on\*
- Control diode
- Integration in existing modern building management systems possible (optional)

\* Adjustment with the enclosed pin



At airports, access control and control is an essential task.



The functionality of the EK locks is used in building management systems of modern office complexes.



In research centers, sensitive laboratory areas may only be entered by a few authorized persons. The EK locks enable this control function.

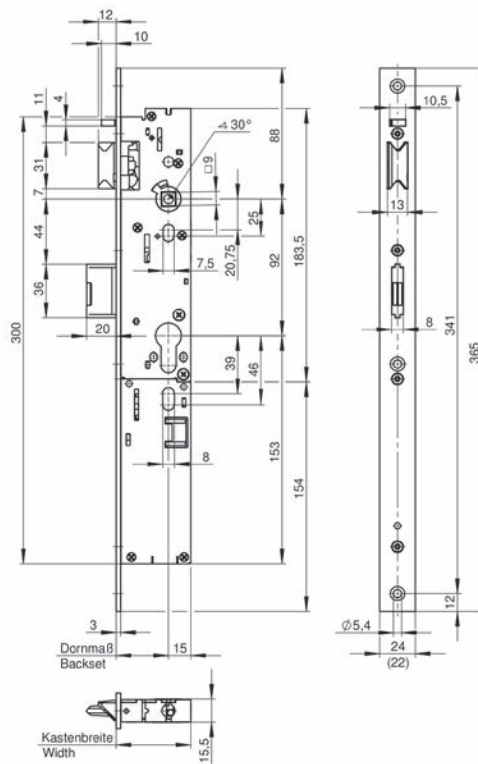
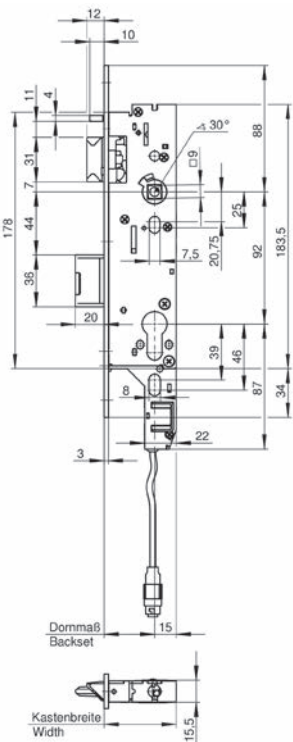




## Full version and basic version

Lock type	Intelligent closing sequence control	Individual duration of open function	Acoustic signal activatable	Control diode	Dead bolt monitoring	Follower monitoring	Steel cam monitoring	Compliant with			Fire doors	Single-leaf	Double-leaf	Reverse panic function	Closure enforcement function C
								EN 14846	EN 179	EN 1125					
7607	■							■	■	■	■		□	■	
707Z	■							■	■	■	■		□	■	
7608	■							■	■	■	■			■	
708Z	■							■	■	■	■			■	
7697	■	■	■	■	■	■	■	■	■	■	■		□	■	
797Z	■	■	■	■	■	■	■	■	■	■	■		□	■	
7698	■	■	■	■	■	■	■	■	■	■	■			■	
798Z	■	■	■	■	■	■	■	■	■	■	■			■	

■ Standard design    □ Special design



Art. no.: 7607, 707Z, 7608, 708Z

Art. no.: 7697, 797Z, 7698, 798Z



Your address here

**WILKA Schließtechnik GmbH**

📍 10 05 70 · 42505 Velbert

☎ +49 2051 2081-0

📠 +49 2051 2081-151

info@wilka.de · www.wilka.de · www.wilka.com